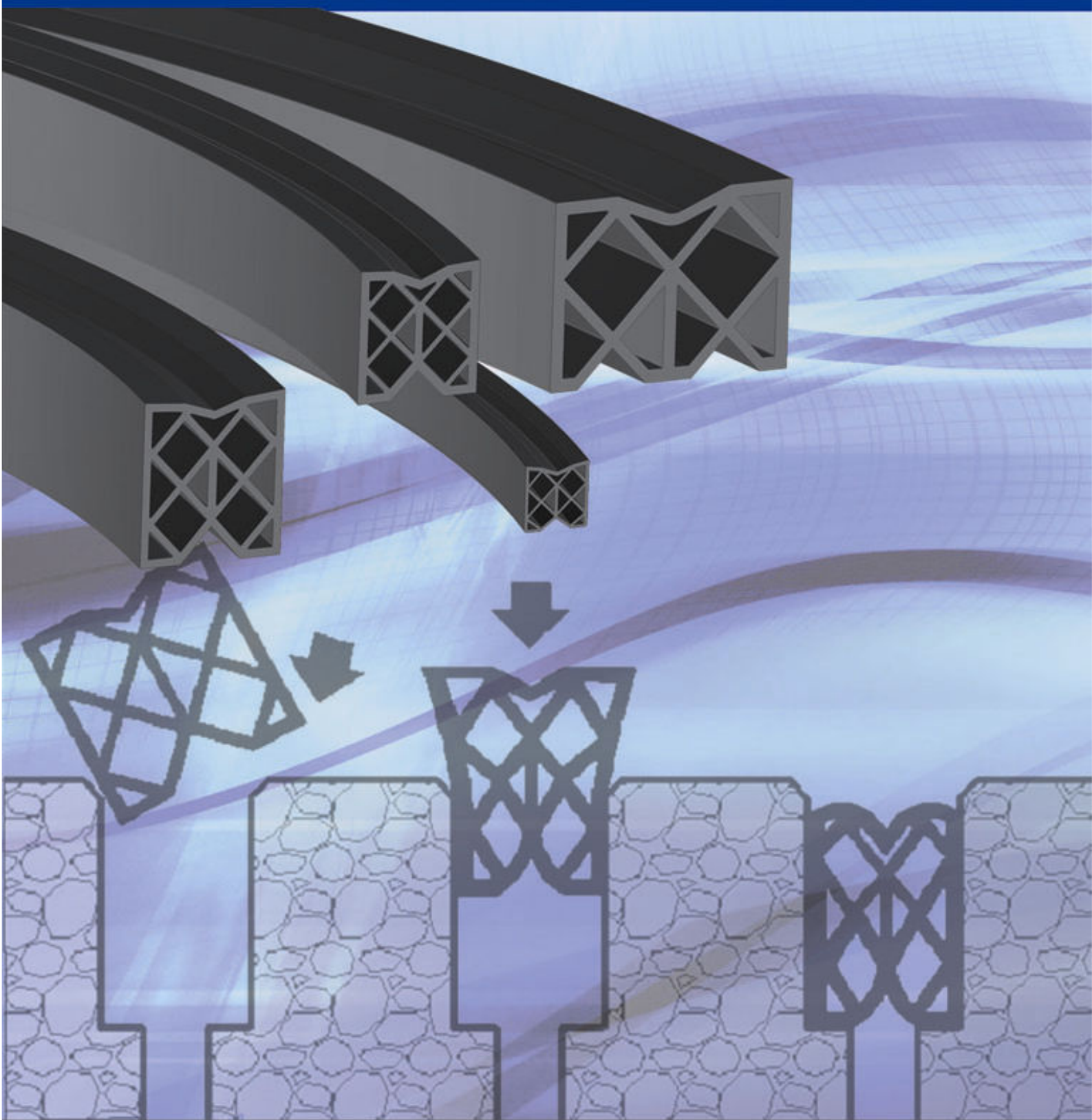


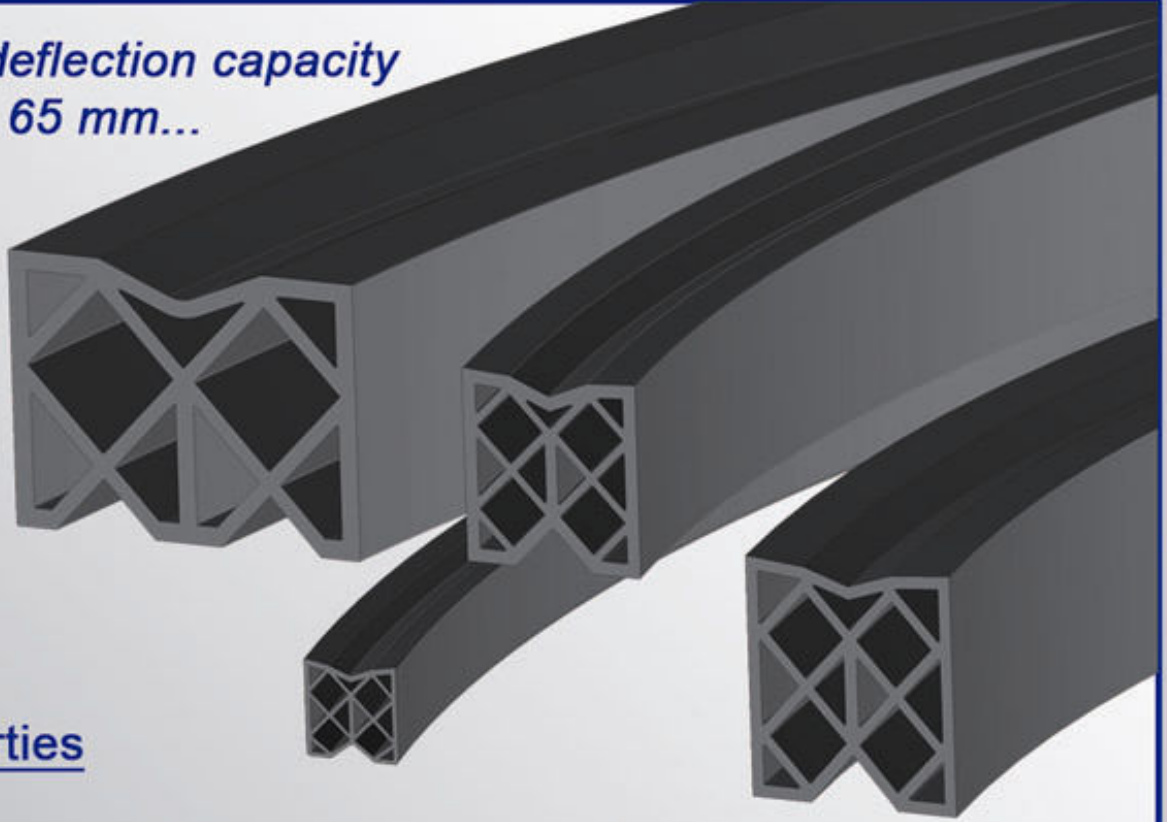
ARSAN KAUCUK DILATATION PROFILES



Arsan Kaucuk

DILATATION PROFILES

*With a deflection capacity
of up to 65 mm...*



Properties

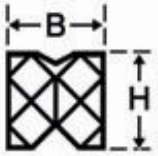
ACME dilatation profiles are designed to fill the joints and gaps with their perfect ability to absorb expansion movements of up to 65 mm. These dilatation profiles can stand against longitudinal, lateral and vertical movements which may occur around these gaps. The high quality rubber and the special design guarantee a long life-time and resistance to oils, fuels, U.V.radiation, ozone and other chemicals.



Special Features

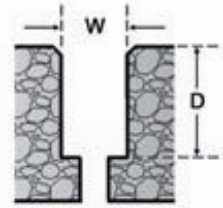
ACME dilatation profiles can easily be installed on non-linear gaps, bends and gradients thanks to the elastic capability of high quality rubber. These profiles can be used in parking areas, bridges, industrial floor applications and under speed bumpers.

Technical data of movement and dimension



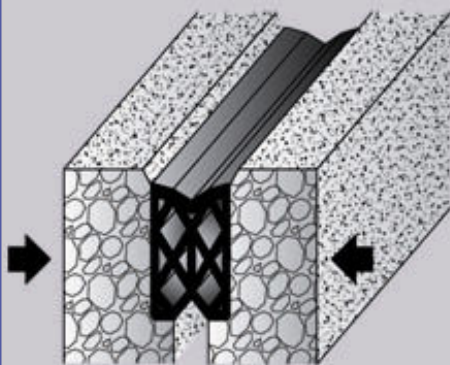
"W" is the minimum value of the gap on which the profile can be installed and this should be adjusted according to the temperature.

"D" is the ideal joint depth for efficient absorption.

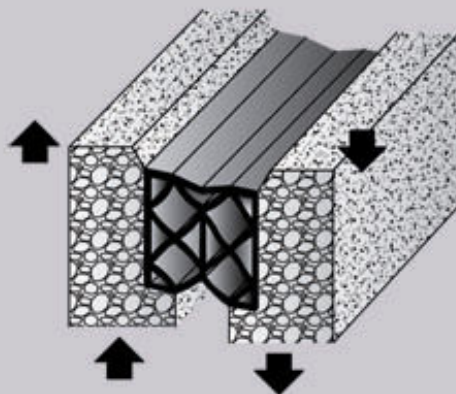


Product name	Profile dimensions			Movement capacity [mm]	Joint gap		Min. dimensions at installation		Weight [kg]
	Width B	Height H	Length L		min.	max.	B ₁	H ₁	
	[mm]	[mm]	[m]		[mm]	[mm]	[mm]	[mm]	
TYPE 1	36	35	30	12	18	30	21	45	0.5
TYPE 2	46	37	30	20	20	40	25	50	0.8
TYPE 3	56	55	20	22	27	49	36	65	1.4
TYPE 4	68	70	20	30	30	60	45	85	2.4
TYPE 5	80	87	20	35	35	70	55	100	3.7
TYPE 6	107	90	12	45	50	95	70	110	4.7
TYPE 7	135	100	12	65	55	120	90	130	5.7

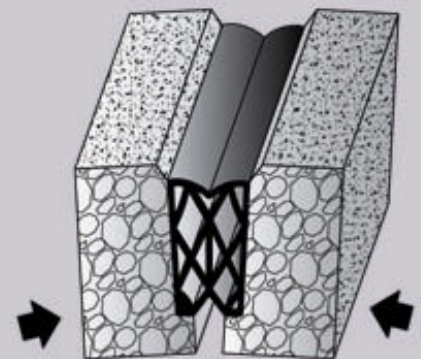
Axial and torsional movement capability



Absorption of horizontal movements

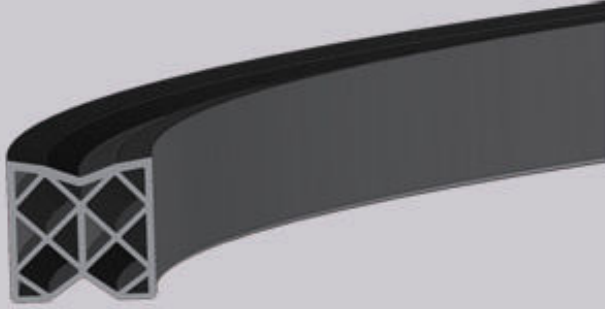


Absorption of vertical movements

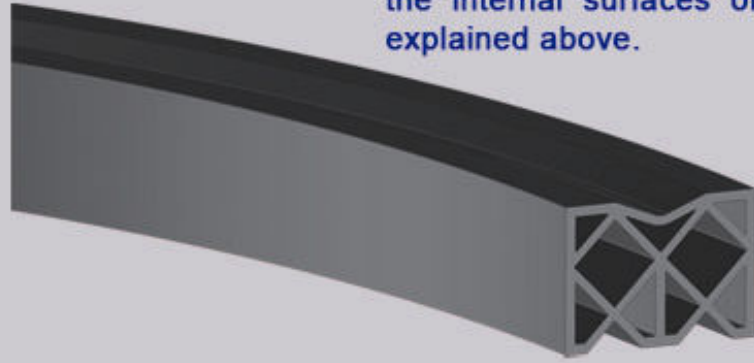


Absorption of torsional movements

Preparations before installation

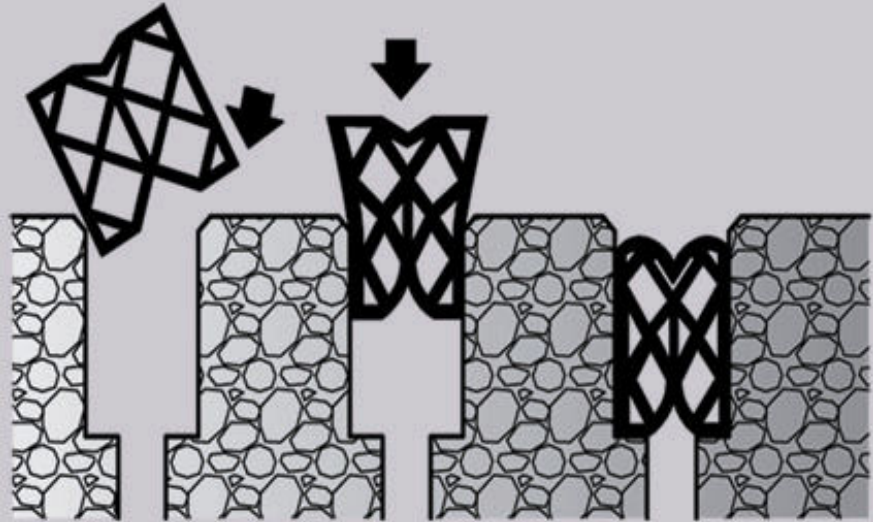


There must be no cracks or broken parts on the sides or corners of the joints. Also, all the surfaces which will be in contact with the rubber profile must be free of dirt, oil, water, stones and other unwanted materials. In addition to this, the elastomeric profile must be cleaned very well like the internal surfaces of the gap as explained above.



How to install

In the installation process, the ACME profile must be protected from too much tension and compression as well as torsional forces. Some special agents can be used for easy sliding and bonding of the profile. Smaller types can be placed inside by the help of a caulking tool and a rubber - faced hammer. For larger sizes, special joint rams can be used. The temperature of the environment must be considered very well for adjusting the dimensions of the gap.



The general procedure for mounting the profile is shown above. With the help of a suitable tool the product can be placed inside the joint gap. Please note that care must be taken in this step.

ARSAN KAUÇUK PLASTİK MAKİNA SANAYİ ve TİCARET A.Ş.

Yukarı Dudullu Organize Sanayi Bölgesi Nato Yolu No : 35 34775 Dudullu - İstanbul / TURKEY

Phone : +90 (216) 365 83 06 Fax : +90 (216) 365 83 16

e-mail : info@arsankaucuk.com.tr

web : www.arsankaucuk.com.tr